

Improved H6 Transformerless Inverter for PV Grid tied power system

Madhuri N.Kshirsagar
Department of Electrical engineering
MGI COET, Shegaon, India
madhuri.n.kshirsagar@gmail.com

Pragati K. Sharma
Department of Electrical engineering
MGI COET, Shegaon, India
pragatisharma91@gmail.com

Shweta A. Deshmukh
Department of Electrical engineering
MGI COET, Shegaon, India
shweta4155@gmail.com

Abstract—Photovoltaic energy (PV) has witnessed an increasing attention and the scientific community has concentrated its efforts in order to develop innovative solutions for the integration of PV systems into the existing distribution grid. The use of transformerless photovoltaic inverters is increasing day by day, because of benefits of achieving lower cost, smaller volume, higher efficiency compared to ones with transformer inverters. The transformerless inverters eliminate the leakage current from the circuit. In this paper the improved six switched topology is proposed with low leakage current using ISPWM technique. The results are compared with traditional sinusoidal pulse width modulation (SPWM). The proposed topology is simulated using MATLAB simulink software.

Keywords—Photovoltaic, H6, transformerless, ISPWM, leakage current.

I. INTRODUCTION

The earlier designs of PV grid-connected inverters featured a full-bridge topology coupled to the mains with a line frequency transformer. The transformer guarantees the galvanic isolation between the PV field and the grid, simplifies the output filter design and the compliance with the electromagnetic interference (EMI) international regulations. However, converters embedding a line frequency transformer are bulky and the transformer accounts for 1-2% of the power losses [1].

Quite often, these grid-connected PV systems include a line transformer in the power-conversion stage, which guarantees galvanic isolation between the grid and the PV system, thus providing personal protection. Furthermore, it strongly reduces the leakage currents between the PV system and the ground, ensures that no continuous current is injected into the grid and can be used to increase the inverter output voltage level [2]. The line transformer makes possible the use of a full-bridge inverter with unipolar pulse width modulation (PWM). It requires only four insulated gate bipolar transistors (IGBTs) and has a good trade-off between efficiency, complexity and price. Due to its low frequency, the line transformer is large, heavy and expensive. Technological evolution has made possible the implementation, within the inverters, of both ground-fault detection systems and solutions to avoid injecting dc current into the grid. The transformer can then be eliminated without impacting system characteristics related to personal safety and grid integration transformer or boost dc–dc converter, and it is simpler and more efficient[3].

But if no boost dc–dc converter is used, the power fluctuation causes a voltage ripple in the PV side at double the line frequency.

However, when no transformer is used, a galvanic connection between the grid and the PV array exists. Dangerous leakage currents (common-mode currents) can flow through the large stray capacitance between the PV array and the ground if the inverter generates a varying common-mode voltage[4]. A topology that generates no variable common-mode voltage is the half-bridge family of inverters, with two, three or more levels.

In this paper, an improved grid-connected inverter topology for transformerless PV systems is presented, which can sustain the same low input voltage as the full-bridge inverter and guarantee to reduce the common-mode leakage current.

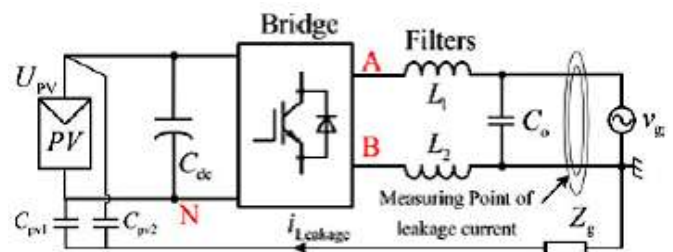


Fig. 1. Leakage current path for transformerless PV inverters.

The leakage currents lead to serious safety and radiated interference issues. Therefore, they must be limited within a reasonable range as specified by standards. As shown in Fig.

1, the leakage current $i_{Leakage}$ is flowing through the loop consisting of the parasitic capacitances (CPV1 and CPV2), bridge, filters (L1 and L2), utility grid, and ground impedance Z_g . The leakage current path is equivalent to an LC resonant circuit in series with the CM voltage, and the CM voltage v_{cm} is defined as,

$$V_{cm} = \frac{V_{AN} + V_{BN}}{2} + \frac{V_{AN} - V_{BN}}{2} \frac{L_2 - L_1}{L_1 + L_2} \quad (1)$$

where v_{AN} is the voltage difference between points A and N, v_{BN} is the voltage difference between points B and N. L_1 and L_2 are the output filter inductors.

In order to eliminate leakage currents, the CM voltage must be kept constant or only varied at low frequency, such as 50 Hz/60 Hz [5,6]. The conventional solution employs the half-bridge inverter. The filter inductor L_2 is zero in the half bridge inverters. Therefore, (1) is simplified as

$$V_{cm} = \frac{V_{AN} + V_{BN}}{2} \quad (2)$$

Many solutions have been proposed to keep CM voltage constant in the full-bridge transformerless inverters. A traditional method is to apply the full-bridge inverter with the bipolar sinusoidal pulse width modulation [7]. The CM voltage of this inverter is kept constant during all operating modes. Thus, it features excellent leakage currents characteristic. However, the current ripples across the filter inductors and the switching losses are likely to be large. The full-bridge inverters with unipolar SPWM control are attractive due to the excellent differential-mode (DM) characteristics such as smaller inductor current ripple, and higher conversion efficiency. However, the CM voltage of conventional unipolar SPWM full bridge inverter varies at switching frequency, which leads to high leakage currents. Two solutions could be applied to solve this problem [8]. One solution is to connect the PV negative terminal with the neutral line of the utility grid directly, such as the Karschny inverter derived from buck–boost converter, and the inverters derived from virtual dc-bus concept. The CM voltage is kept constant by these full-bridge topologies with unipolar modulation methods. Another solution is to disconnect the dc and ac sides of the full-bridge inverter in the freewheeling modes. Depending upon the later method, various topologies are developed which are discussed further.

II. TRANSFORMERLESS INVERTER TOPOLOGIES

Various topologies have been developed and researched based on this method for keeping the CM voltage constant, such as the H5 topology, the highly efficient and reliable inverter concept (HERIC) topology, the H6-type topology and the hybrid-bridge topology etc., are shown in fig. 2.

Fig. 2(a) shows the H5 topology. It employs an extra switch on the dc side of inverter [9]. As a result, the PV array is disconnected from the utility grid when the inverter output voltage is at zero voltage level, and the leakage current path is cut off. The HERIC topology shown in fig. 2(b) employs two extra switches on the ac side of inverter, so the leakage current path is cut off as well. Furthermore, both the H5 topology and the HERIC topology have been compared in terms of efficiency and leakage currents characteristic.

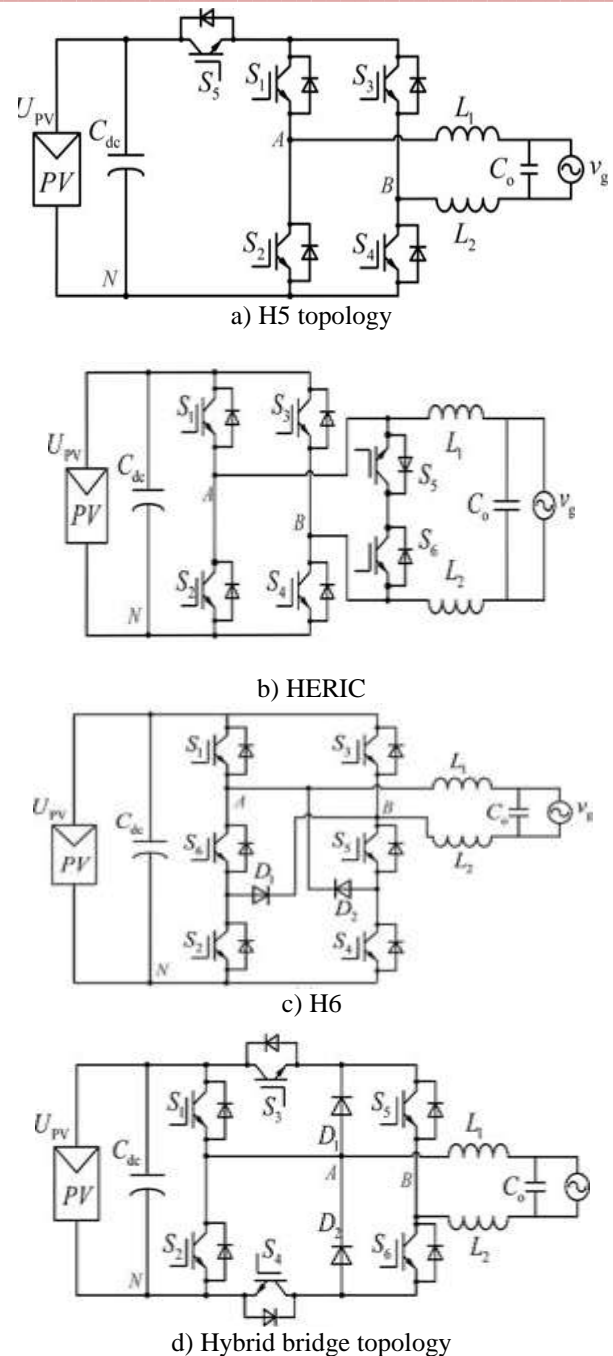
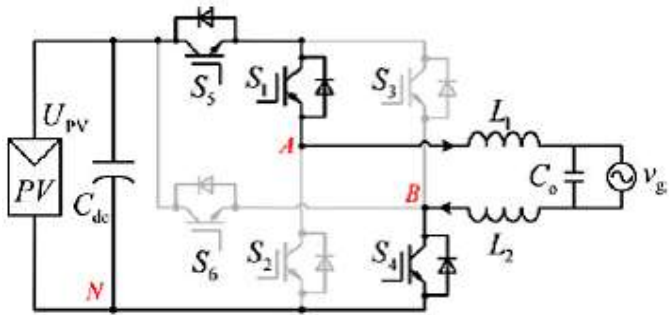


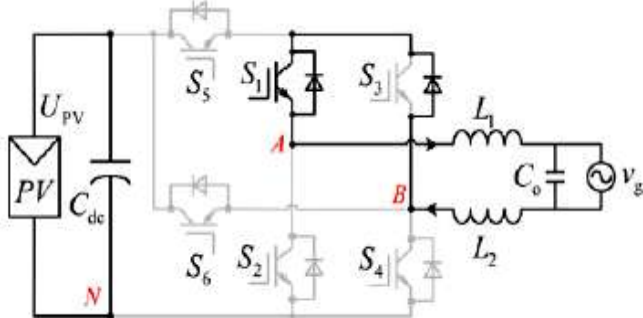
Fig 2. Four typical topologies of transformerless full-bridge inverters.

In this paper, a family of novel H6 full-bridge topologies is proposed for the transformerless PV grid-tied inverters. An extra switch is inserted to the H5 topology for forming a new current path and for the purpose of reducing conduction loss. Therefore, in the active modes, the inductor current of the proposed H6 topology flows through two switches during one of the half-line periods and through three switches during another half-line period. The proposed H6 topology has achieved the minimum conduction loss, and also has featured with low leakage currents. The operation modes of the H6 topology are discussed in detail further.

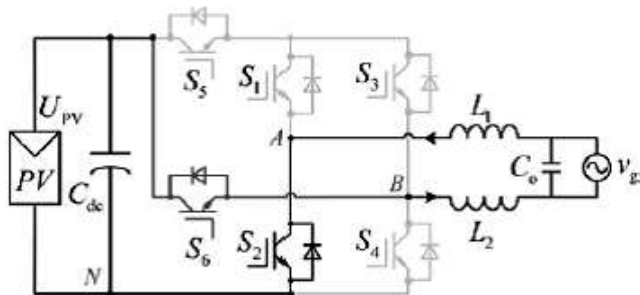
III. OPERATION MODE ANALYSIS



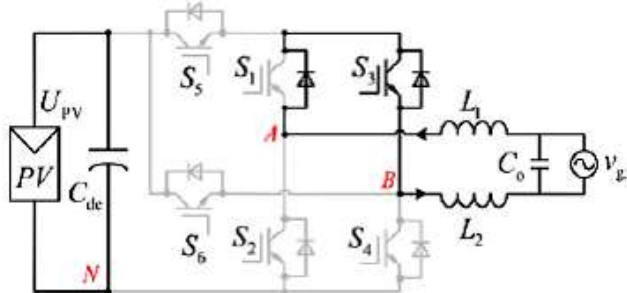
(a) Active mode in the positive half period



(b) Freewheeling mode in the positive half period



(c) Active mode in the negative half period



(d) Freewheeling mode in the negative half period

Fig 3. Equivalent circuits of operation modes of H6 topology.

(a) Freewheeling mode in the negative half period, voltage of the topology, $v_{AB} = v_{AN} - v_{BN}$. The CM voltage $v_{CM} = 0.5(v_{AN} + v_{BN})$. a) Mode I is the active mode in the positive half period of the utility grid voltage, as shown in Fig. (a). S1, S4, and S5 are turned ON, and the other switches are turned OFF. The inductor current is flowing through S1, S4, and S5. $v_{AN} = UPV$, $v_{BN} = 0$; thus, $v_{AB} = UPV$, and the CM voltage $v_{CM} = (v_{AN} + v_{BN})/2 = 0.5UPV$.

(b) Mode II is the freewheeling mode in the positive half period of the utility grid voltage, as shown in Fig. (b). S1 is turned ON; the other switches are turned OFF. The inductor current is flowing through S1 and the antiparalleled diode of

S3. $v_{AN} = v_{BN} \approx 0.5UPV$; thus, $v_{AB} = 0$, and the CM voltage $v_{CM} = (v_{AN} + v_{BN})/2 \approx 0.5UPV$.

(c) Mode III is the active mode in the negative half period of the utility grid voltage, as shown in Fig. (c). S2, S3, and S6 are turned ON; the other switches are turned OFF. The inductor current is flowing through S2 and S6. Although S3 is turned ON, there is no current flowing through it, and the switch S3 has no conduction loss in this mode. Nevertheless, in the H5 topology, the inductor current flows through S2, S3, and S5. Therefore, the conduction loss of proposed topology is less than that of H5 topology. In this mode, $v_{AN} = 0$, $v_{BN} = UPV$; thus, $v_{AB} = -UPV$, and the CM voltage $v_{CM} = (v_{AN} + v_{BN})/2 = 0.5UPV$.

(d) Mode IV is the freewheeling mode in the negative half period of the utility grid voltage, as shown in Fig. (d). S3 is turned ON, and the other switches are turned OFF. The inductor current is flowing through S3 and the antiparalleled diode of S1. $v_{AN} = v_{BN} \approx 0.5UPV$; thus, $v_{AB} = 0$, and the CM voltage $v_{CM} = (v_{AN} + v_{BN})/2 \approx 0.5UPV$. Based on the aforementioned analysis, the PV array can be disconnected from the utility grid when the output voltage of the proposed H6 inverter is at zero voltage level and the leakage current path is cut off. The CM voltage of the proposed topology in each operation mode is equals to $0.5UPV$, and it results in low leakage current characteristic of the proposed H6 topologies.

IV. ISPWM TECHNIQUE

The harmonics in the inverter can be eliminated using pulse width modulation switching technique. In the conventional inverters the sinusoidal PWM is used in which sine wave is the modulating wave and triangular wave is the carrier wave. But it inhibits poor performance with regard to maximum attainable voltage and power.

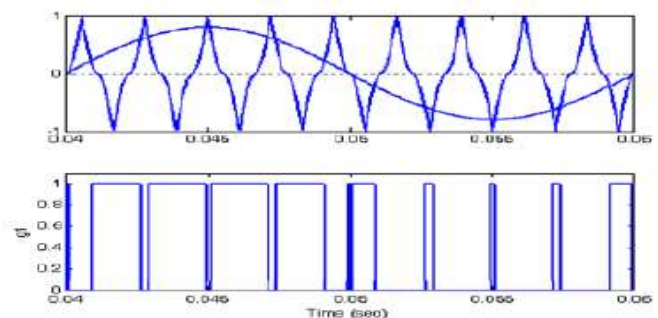


Fig. 4. Firing pulse generation in ISPWM

Thus the modulation strategy employed in the inverter is the ISPWM. In this technique, inverse sine wave is used as carrier wave. The ISPWM technique has better spectral quality and higher fundamental component compared conventional sinusoidal PWM. Also there is reduction in total harmonic distortion (THD). The pulses are generated when amplitude of the reference sine wave is greater than that of inverted sine carrier. The total harmonic distortion for different values of switching frequencies is obtained and is found to be lesser than the conventional methods. By employing the ISPWM, it has been proved that the fundamental voltage is improved throughout the working range and is greater than the voltage obtained using conventional methods [10-11].

V. SIMULATION AND RESULTS

The simulation of H6 inverter is carried out with ISPWM technique, which is as shown in figure below. The figure consist of the H6 inverter along with the ISPWM generation scheme and the output are shown with the help of scopes separately.

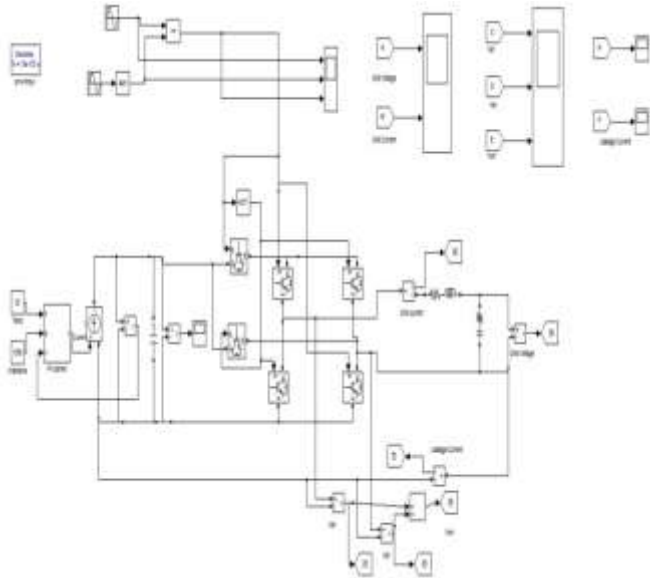


Fig. 5. Simulation of H6 inverter with ISPWM Technique. PWM methods reduce the harmonics by shifting frequency spectrum to the vicinity of high frequency band of carrier signal. In the case of sinusoidal PWM scheme, the control signal is generated by comparing a sinusoidal reference signal and a triangular carrier.

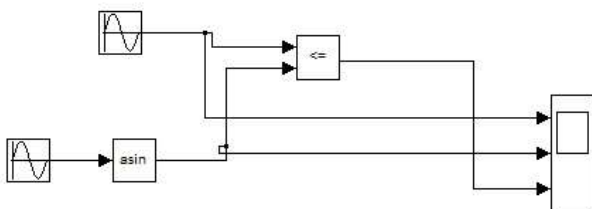


Fig. 6: Simulink Model for ISPWM technique.

The SPWM technique, however, inhibits poor performance with regard to maximum attainable voltage and power [12]. A novel PWM technique called Inverted-Sine PWM for harmonic reduction of the output voltage of ac-dc converters is presented. In addition, the control scheme based on ISPWM can maximize the output voltage for each modulation index.

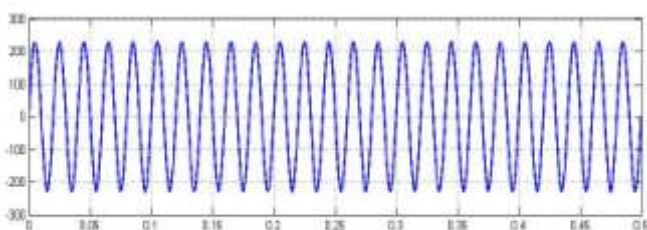


Fig. 7: Grid voltage using ISPWM technique.

The above figures show that the output obtained is purely sinusoidal. The voltage amplitude is 230 V.

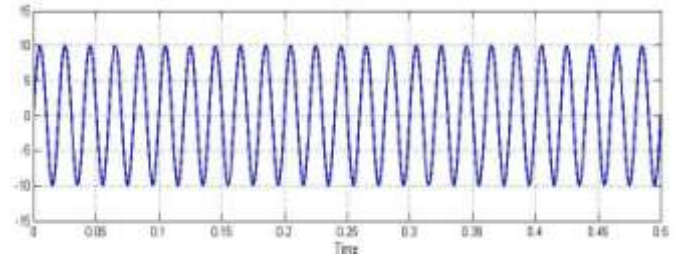


Fig. 8: Grid current using ISPWM technique.

The amplitude of the current is nearly 10 A and also the waveform is sinusoidal. The results of the ISPWM technique when compared with the conventional SPWM, we can see that the ripples in the output are reduced to a great amount in the transformerless inverter.

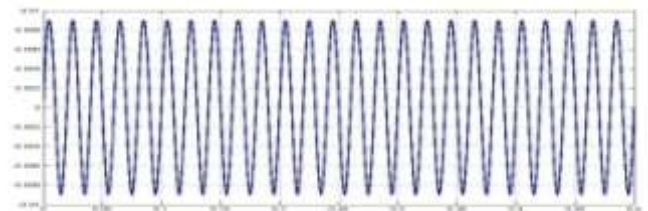


Fig. 9: Leakage current using ISPWM

Leakage current is the current that flows through the protective ground conductor to ground. In the absence of a grounding connection, it is the current that could flow from any conductive part or the surface of non-conductive parts to ground if a conductive path was available (such as a human body). There are always extraneous currents flowing in the safety ground conductor. In the transformerless inverter the leakage current flows between the PV system and the ground. It could pose a shock hazard to someone touching the ungrounded equipment and ground at the same time.

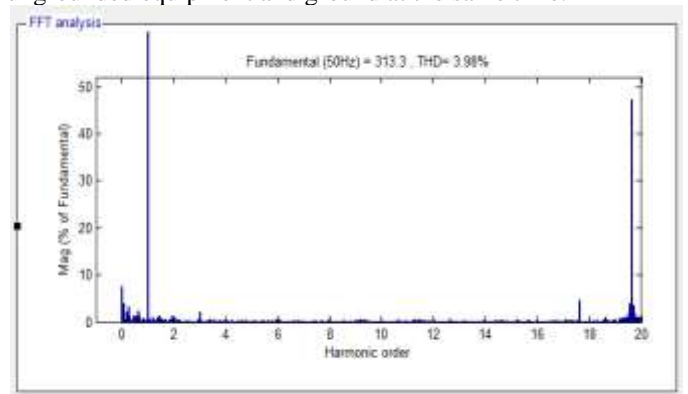


Fig 10: THD of ISPWM

The comparison of both the techniques can also explained with the help of graph as shown in figure below. It can be seen that total %THD of ISPWM is 3.98% and that of SPWM is 6.21% respectively. Thus with the help of ISPWM technique the obtained THD is less than the conventional SPWM technique.

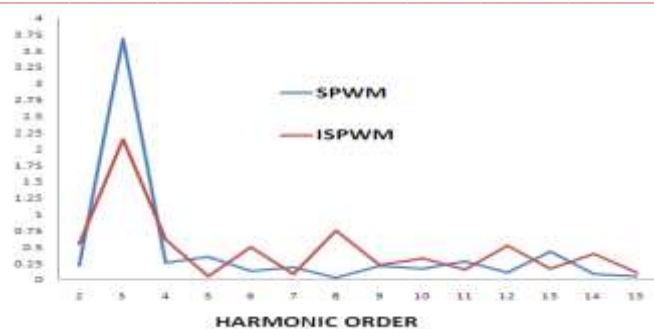


Fig 11. Graphical comparison between PWM techniques.

VI. CONCLUSION

The improved transformerless grid connected inverter for the single phase power system is presented in the paper. In the paper the inverter is implemented using novel ISPWM technique and the results are compared with conventional SPWM. It is seen that the quality of output is greater in ISPWM than the other two. Also the THD of this novel technique is less than SPWM. Hence the H6 inverter with ISPWM technique can be the better solution for single phase power systems.

REFERENCES

- [1] Li Zhang, Kai Sun, Member, Yan Xing and Mu Xing "H6 Transformerless Full-Bridge PV Grid-Tied Inverters" IEEE Transactions on Power Electronics, Vol. 29, No.3, pp. 1229 - 1238, March 2014. Clerk Maxwell, A Treatise on Electricity and Magnetism, 3rd ed., vol. 2. Oxford: Clarendon, 1892, pp.68-73.
- [2] Soeren Baekhoej Kjaer, John K. Pedersen and Frede Blaabjerg, "A review of Single phase grid connected Inverters for photovoltaic Modules", IEEE Trans. on Industry Application, Vol. 41, No. 5, pp. 1292-1306, Sept/Oct. 2005.
- [3] Huafeng Xiao and Shaojun Xie, "Leakage current analytical Model and Application in single phase transformerless Photovoltaic grid connected Inverter", IEEE Trans. on Electromagnetic Compatibility, Vol. 52, No. 4, pp. 902-913, Nov. 2010.
- [4] Roberto Gonzalez, Jesus Lopez, Pablo Sanchis and Luis Marroyo, "Transformerless Inverter for Single phase Photovoltaic systems", IEEE Trans. on Power Electronics, Vol. 22, No. 2, pp.693-697, March 2007.
- [5] Roberto Gonzalez, Eugenio Gubia, Jesus Lopez and Luis Marroyo, "Transformerless single phase multilevel based photovoltaic inverter", IEEE Trans. on Industrial Electronics, Vol. 55, No. 7, pp.2694-2702, July 2008.
- [6] Oscar Lopez, Francisco D. Frejedo, Alejandro G. Yepes, Pablo Fernandez-Comesana, Jano Malvar, Remus Teodorescu and Jesus Doval - Gandoy, "Eliminating ground current in a transformerless photovoltaic Application", IEEE Transactions on Energy Conversion, Vol. 25, no. 1, pp. 140-147, March 2010.
- [7] Madhuri Kshirsagar, Dr. P. J. Shah "Evaluation of Transformerless Inverters for Single Phase Photovoltaic Systems" International Journal of Innovative Research in Electrical, Electronics, Instrumentation and Control Engineering (IJIREEICE), Vol. 4, No. 6, pp.139-145, June 2016.
- [8] Samuel Vasconcelos Araujo, Peter Zacharias and Regine Mallwitz, "Highly efficient Single phase Transformerless inverters for grid connected Photovoltaic systems", IEEE Trans.

- on Industrial Electronics, Vol. 57, No. 9, pp.3118-3128, September 2010.
- [9] Huafeng Xiao, Shaojun Xie, Yang Chen and Ruhai Huang, "An Optimized Transformer-less Photovoltaic grid connected inverter", IEEE Trans. on Industrial Electronics, Vol. 58, No. 5, pp.1887-1895, May 2011.
- [10] Li Zhang, Kai Sun, Lanlan Feng, Hongfei Wu and Yan Xing, "A family of neutral point clamped full bridge topologies for transformerless Photovoltaic grid-tied inverters", IEEE Trans. on Power Electronics, Vol. 28, No. 2, pp.730-739, February 2013.
- [11] D. A. Patil and S. K. Patil, "A new modulation approach to decrease total harmonic distortion in VSC using ISPWM Technique", International Journal of Engineering and science research, Vol.3, Issue 7, pp. 4237-4240, May 2013.
- [12] Madhuri Kshirsagar, Dr. P. J. Shah "Simulation model of H6 Transformerless single phase Full Bridge PV Grid tied Inverters", International Journal of Advanced Research in Electrical, Electronics and Instrumentation Engineering (IJAREEIE), Vol. 6, issue 1, January 2017.