

Performance Evaluation of Channel Assignment In Wireless Network Using Genetic Algorithm

Imran Ahmad

Department of Computer Science & Engineering
Patel Institute of Technology BHOPAL (M.P.)
imimran86@gmail.com

Prof. Parmalik Kumar

Department of Computer Science & Engineering
Patel Institute of Technology BHOPAL (M.P.)

Prof. Sandeep Singh

Department of Computer Science & Engineering
Patel Institute of Technology BHOPAL (M.P.)

Tapesh Bharti

Department of Computer Science & Engineering
Anjuman College of Engg. & Technology

Abstract— Resource allocation in wireless mesh network is very critical task. For the allocation of resource such as channel used various scheduling technique such as centralized and distributed. In centralized technique the allocation of channel resource share in single window process. For the improvement of the performance various authors used various optimization technique such as DCF game theory and other heuristic function.

In this dissertation used genetic algorithm for the selection of resource such as channel in wireless mesh network. By the genetic algorithm the selection of channel is very fair and improved the channel capacity and decrease the value of degree of interference.

The proposed system of channel selection simulate in MATLAB 7.8.0 software. This software is well known simulation software for the analysis of communication network

The experimental result of simulation shows that better in case of channel capacity and degree of interference. The proposed selection technique compare with game theory selection process.

Introduction

Resource allocation and resource utilization is important factor in wireless mesh network. In wireless mesh network faced a problem of traffic congestion and delay rate. Such type of event generated due to sharing of channel and limited number of channel. For the reduction of traffic congestion and delay various authors used optimization technique. In consequence of optimization technique one author are used game theory techniques. Game theory technique search number of available channel using Depth search technique and increase the rate of delay. Now in this dissertation used genetic algorithm for the selection of channel. Genetic algorithm is dynamic population based searching technique used for the process of resource optimization. The process of optimization finally gives the optimal list of channel for allocation. [4], [5], [6]

Genetic Algorithm

Genetic algorithms are search algorithms based on the mechanics of natural selection and natural genetics. They combine survival of the fittest among string structures with a structured yet randomized information exchange to form a search algorithm with some innovative flair of human search. These algorithms are started with a set of random solution called initial population. Each member of this population is

called a chromosome. Each chromosome of this problem which consists of the string genes. The number of genes and their values in each chromosome depends on the population specification. In the algorithm, the number of genes of each chromosome is equal to the number of the nodes in the DGA and the gene values demonstrate the scheduling priority of the related task to the node, where the higher priority means that task must executed early. Set of chromosomes in each iteration of GA is called a generation, which are evaluated by their fitness functions. The new generation i.e., the offspring's are created by applying some operators on the current generation. These are called crossover which selects two chromosomes of the current population, combines them and generates a new child (offspring), and mutation which changes randomly some gene values of chromosomes and creates a new offspring. Then, the best offspring's are selected by evolutionary select operator according to their fitness values. The GA has four steps as shown below algorithms: [1], [2], [3]

Step 1: Read total channel (estimated completion time) and R values from file and get N_p , N_g , X_r and M_r from the user where

N_p → (initial population size),

N_g → (the number of generations),

X_r → (crossover probability),

M_r → (mutation probability)

Step 2: Calculate the bottom-level and the top-level of each channel in total population;
 Generate initial population (P_i);
 $P_{current} \leftarrow P_i$;
 Schedules \leftarrow Decoding heuristic ($P_{current}$);
 BestSchedule \leftarrow evaluate (schedules);

Step 3: while stop criterion not satisfied, do begin
 $P_{new} \leftarrow \{\}$;
 3 - 1: repeat for ($N_p/2$) times
 Father \leftarrow select ($P_{current}$, sum_of_fitness);
 Mother \leftarrow select ($P_{current}$, sum_of_fitness);
 $P_{new} \leftarrow P_{new} \cup$ crossover (father, mother, child1, child2, X_r);
 End repeat;
 3 -2: for each chromosomes $\in P_{new}$ do begin
 Mutate (chromosomes, M_r);
 End for
 3-3: $P_{new} \leftarrow P_{new} \cup$ { four best chromosomes of $P_{current}$ }
 $P_{current} \leftarrow P_{new}$;
 Schedules \leftarrow decodingheuristic ($P_{current}$);
 Best schedule \leftarrow evaluate (schedules);
 End while
 Step 4: Repeat the best schedule

Using genetic selection approach, we can improve the efficiency of channel allocation in mesh network. In mesh network the total physical channel allocated as set of population for the processing of selection of resource.

Proposed Algorithm:

- Let n is the no. of MR ($j_1, j_2, \text{ and } j_3 \dots j_n$).
- Let M is the no. of resource (r_1, r_2, \dots, r_m)
- Compute the selection parameter indicator value.
- For each resource obtain the information like channel, computing capacity and current load of mesh network.
- For each MR obtain the MR size and the time needed to complete to complete the MR.
- Create grid matrix for the process and apply selection process.
- Generate the initial population of MR and apply the genetic selection mechanism to select the optimal MR from population. The selection of MR is done using fitness function evaluation.

$F(x_i) =$ Where $f(x_i)$ is the fitness of individual x_i and $F(x_i)$ is the total pheromone of that individual MR selected. Here in the process of genetic algorithm crossover phase are not required. For the process of mutation we fixed the value of variable probability $p=0.07$. And finally gets the optimized set of MR for allocation. Calculate local pheromone and set process priority order for completion of MR. If selected MR priority is high, then execute the MR. Again select population and repeat the process until all MR are processed.

The key idea of selection operator is to give preference to better individuals by allowing them to the pass on their genes to the next generation and prohibited the entrance of worst fit individuals into next generation; here we are using genetic approach to only select the channel for solution of mesh network

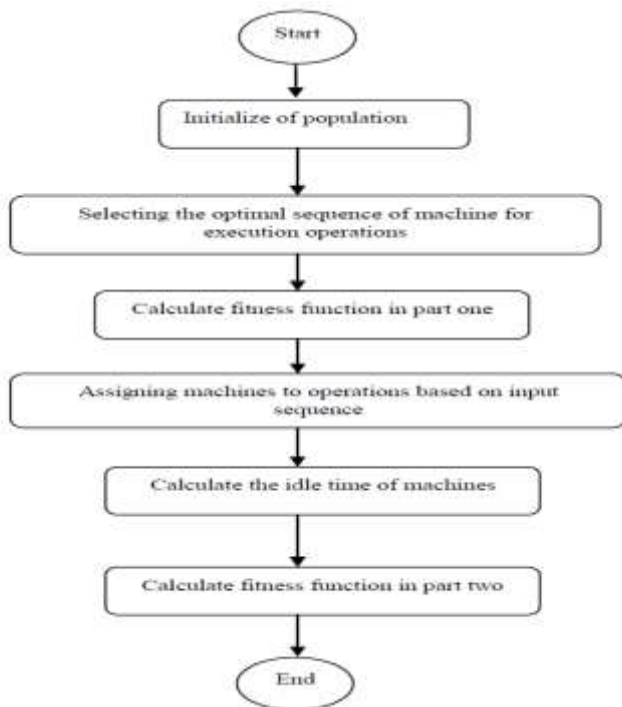


Figure : Shows that working process of genetic algorithm.
 [7], [8]

Proposed Algorithm

INITIALIZED
POPULATION



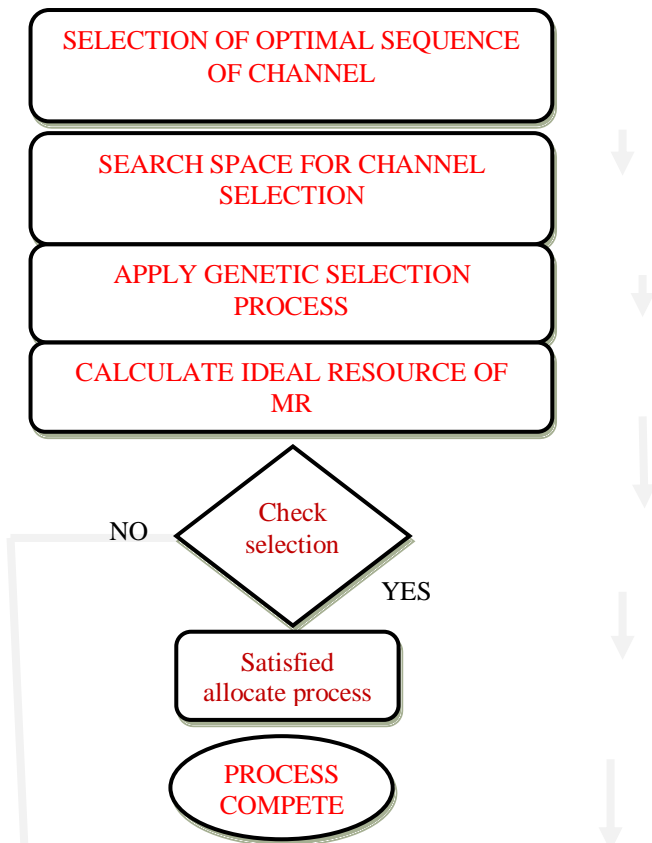


Figure 3.2: Proposed model. [10], [11], [12]

References

[1] Sahar Hoteit, Stefano Secci, Rami Langar, Guy Pujolle "A Nucleolus-Based Approach for Resource Allocation in OFDMA Wireless Mesh Networks" TRANSACTIONS ON MOBILE COMPUTING, IEEE VOL. 12, 2013. Pp 2145-2154.

[2] Yao-Win Hong, Wan-Jen Huang, Fu-Hsuan Chiu, and C.-C. Jay Kuo "Cooperative Communications in Resource-Constrained Wireless Networks" SIGNAL PROCESSING MAGAZINE IEEE 2007. Pp 47-57.

[3] Mohamed Salem, Abdulkareem Adinoyi, Mahmudur Rahman, Halim Yanikomeroglu, David Falconer, Young-Doo Kim, Eungsun Kim, Yoon-ChaeCheong "An Overview of Radio Resource Management in Relay-Enhanced OFDMA-Based Networks" COMMUNICATIONS SURVEYS & TUTORIALS, IEEE VOL. 12, 2010. Pp 422-438.

[4] Ho Ting Cheng and Weihua Zhuang, University of Waterloo "Joint Power-Frequency-Time

Resource Allocation in Clustered Wireless Mesh Networks" IEEE 2008. Pp 45-52.

[5] Mohammad Fathi, Hassan Taheri, Mehri Mehrjoo "Cross-Layer Joint Rate Control and Scheduling for OFDMA Wireless Mesh Networks" IEEE 2009.

[6] Ho Ting Cheng, Weihua Zhuang "Novel Packet-Level Resource Allocation with Effective QoS Provisioning for Wireless Mesh Networks" IEEE TRANSACTIONS ON WIRELESS COMMUNICATIONS IEEE vol 8 2009. Pp 694-700.

[7] F. Kaabi, S. Ghannay, and F. Filali "Channel Allocation and Routing in Wireless Mesh Networks: A survey and qualitative comparison between schemes" International journal of wireless & mobile networks vol 2, 2009. Pp 132-150.

[8] Aria Nosratinia, Todd E. Hunter "Cooperative Communication in Wireless Networks" IEEE Communications Magazine IEEE 2004. Pp 74-80.

[9] Sahar Hoteit, Stefano Secci, Rami Langar, Guy Pujolle "Strategic Subchannel Resource Allocation for Cooperative OFDMA Wireless Mesh Networks" IEEE 2006. Pp 1-5.

[10] I. Ahmed, A. Mohamed, T. Fouly, and Y. Hu, "On the Fairness of Frequency Domain Resource Allocation in Wireless Mesh Networks- A Survey," Proc. IEEE GCC Conf. and Exhibition, Feb. 2011.

[11] F. Brah, A. Zaidi, J. Louveaux, and L. Vandendorpe, "On the Lambert-W Function for Constrained Resource Allocation in Cooperative Networks," EURASIP J. Wireless Comm. and Networking, 2011, pp. 1-13.

[12] D. Saha, A. Dutta, D. Grunwald, and D. Sicker, "Channel Assignment in Virtual Cut-Through Switching Based Wireless Mesh Networks," Proc. 11th Int'l Conf. Distributed Computing and Networking (ICDCN), Jan. 2010.

[13] F. Martignon, S. Paris, I. Filippini, and A. Capone, "Efficient Bandwidth Allocation in Wireless Community Networks," Proc. Wireless Days Conf., Oct. 2011.

[14] Y. Park and E.-S. Jung, "Resource-aware routing algorithms for multi hop cellular networks," International Conference on Multimedia and Ubiquitous Engineering, 2007., Pp. 1164-1167.

- [15] S. Sadr, A. Anpalagan, and K. Raahemifar, "Radio resource allocation algorithms for the downlink of multiuser OFDM communication systems," *IEEE Commun. Surveys Tutorials*, 2009, pp. 92 – 106.
- [16] C. Isheden , G. P.Fettweis "Energy-efficient link adaptation with transmitter CSI" in *Proc. IEEE WCNC*, 2011, Pp 1381–1386.
- [17] M. Guowang, N. Himayat, G. Y. Li, "Energy-efficient link adaptation in frequency-selective channels" *IEEE Trans. Commun.* vol. 58, no. 2, 2010, Pp 545–554.
- [18] R. S. Prabhu , B. Daneshrad "Performance analysis of energy-efficient power allocation for MIMO-MRC systems" *IEEE Trans. Commun.*, vol. 60, no. 8, 2012, Pp 2048–2053.
- [19] C. Isheden, Z. Chong, E. Jorswieck, and G. Fettweis"Framework for link-level energy efficiency optimization with informed transmitter" *IEEE Trans.Wireless Commun.*, vol. 11, no. 8, 2012, Pp 2946–2957.
- [20] C. Isheden , G. Fettweis "Energy-efficient link adaptation on a Rayleigh fading channel with receiver CSI" in *Proc. IEEE ICC*,2011,